

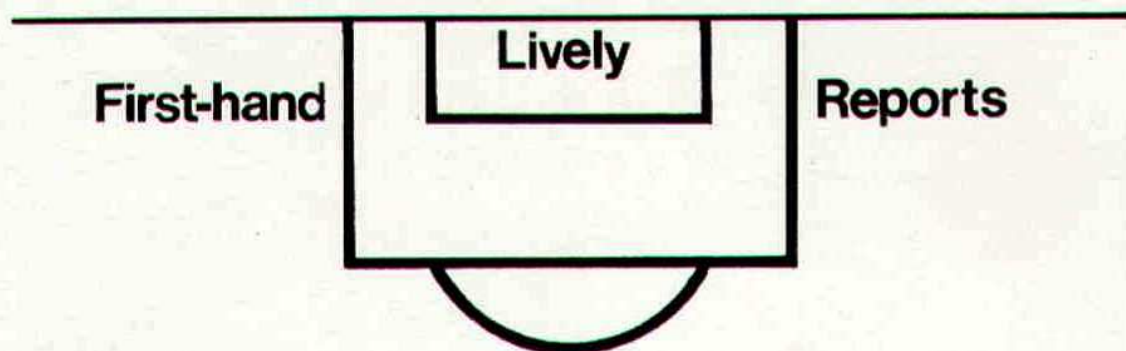
SWINDON TOWN

FOOTBALL CLUB

official programme



1/-



Complete Comprehensive Coverage

Close-up Action Shots Every Game

At home or away

The Evening Advertiser
has it covered

M^cILROYS

the Department Store
with that something extra *Service!*

Free

DELIVERIES
ESTIMATES ON CARPETS & CURTAINS
CARPET FITTING

WILLIAM McILROY (Swindon) LTD.

Tel. 5294



SWINDON TOWN FOOTBALL COMPANY LIMITED

Registered Office: COUNTY GROUND, SWINDON

President: Mr. W. J. CASTLE

Vice-President: Mr. J. DAVIES

Directors:

Chairman: Mr. H. E. LANE

Vice-Chairman: Mr. R. FRICKER

Messrs. F. L. COLLINGS, A. W. DONE, M. EARLE, C. J. GREEN, F. PLYER,
H. WILLIAMS, K. H. WILMER and Dr. J. NICHOLAS

General Manager: Mr. R. A. MORSE

Team Manager: Mr. F. FORD

SATURDAY, 11th OCTOBER, 1969

Division II

SWINDON v SHEFFIELD UNITED

Kick-off 3 p.m.

SWINDON TOWN	SHEFFIELD UTD.	OFFICIALS
1 Downsborough	1 Hodgkinson	REFEREE:
2 Thomas	2 Badger	Mr. F. M. Nicholson
3 Trollope	3 Heaton	Manchester
4 Butler	4 Barlow	
5 Burrows	5 Colquhoun	
6 Harland	6 Powell	
7 Heath	7 Woodward	
8 Horsfield	8 Addison	
9 Smart	9 Tudor	LINESMEN:
10 Noble	10 Currie	Red Flag:
11 Rogers	11 Reece	Mr. G. W. Holt
12 Jones	12 Salmons	Coseley, Staffs.
Colours:	Colours:	Yellow Flag:
Red and White	White and Black	Mr. A. L. Hart
		London

G. A. Streetly

Tobacconist and Confectioner

**10 BOURNE ROAD
MOREDON SWINDON
Telephone 4956**

C. Goodenough and Sons

Removal and Storage Contractors
any distance

**25 Cricklade Street Swindon
Telephone 4555 and 3855**

CECIL GREEN

Artistic Decorations in all its branches

**12 Armstrong Street
Swindon Wilts
Telephone 4593**

W. J. SELWOOD

Telephone Swindon 5884

Saddlery

General Leather Goods Manufactured and
Repaired to Your Individual Requirements

**103 BROAD STREET
SWINDON WILTSHIRE**

Notton's Cafe

COUNTY ROAD

200 yards from Ground

Perfect meals at all times

For High Class
Central Heating, Plumbing
Painting and Decorating
Electrical Installations
and Repairs

**NORTH WILTS
Sanitary and Heating
Co. Ltd.**

**NEWPORT STREET SWINDON
Telephone 5373/4**



THE ALCOHOL FUEL

COATE GARAGE

REPAIRS - OVERHAULS - WELDING
SERVICING - REBORING - TYRES

Props. E. V. & W. H. Mattick
Marlborough Road Swindon

Leese, Ing & Co. Ltd.

Mineral Water and
Squash Manufacturers

LANSDOWN ROAD SWINDON

Telephone 22744

Maylott Studios

For Group and Sports Photographs

Official Photographer to
Swindon Town Football Club

**31 Faringdon Road
Telephone 22792**

Always at your service

L. Bibby

For all Types — Rags, Iron and Metal, etc.
Spot Cash Paid. Please Telephone 2101
and our van will call.

**THE PADDOCK ERMIN STREET
STRATTON ST. MARGARET**

news & views

Now we play two home games after two away. It was pleasing to record another win at Bolton — a victory well deserved and the point we gained at Carlisle was equally pleasing.

This afternoon we welcome a team which, to most of our supporters, are newcomers to the County Ground. If memory serves me right, Sheffield United first visited Swindon in season 1907-08 in the English Cup Competition and the result was a 0—0 draw — our visitors won the replay 3 goals to 2.

The only other occasion the two teams met was again in the First Round of the F.A. Cup at Swindon in season 1920-21. We won that game by 1 goal to nil, only to be defeated at home in the next round by Chelsea, a team of many talents which included Jack Cock, one of the finest centre-forwards ever, Jack Harrow, a great full-back, and goalkeeper Nils Middlesbro, a Dane, whose goal kicks often went the length of the field. At outside left for Swindon was A. S. Davies, still working for the club at seventy-three years of age.

Sheffield United have always played in either Division I or II of the Football League, and today they are one of the strongest teams in the division. To date they occupy second position with 18 points from thirteen games, with quite an impressive away record, and a goal average of 11 goals for and nine against; quite good on opponents grounds.

Sheffield United were one of the original members of the League, and have a fine ground at Bramall Lane with a capacity of over 65,000. They still retain their famous red and white striped shirts and black shorts. Never what one might call a fashionable club which pays tremendous transfer fees, Sheffield is nevertheless a great force in the football world, probably best known for the loyalty of its players.

We hope today we shall see between the goalposts a man who is a credit to football, namely Alan Hodgkinson. He made his first appearance in the League side in August, 1956, and has retained his place ever since.

A special welcome to the Manager, Mr. John Harris, who at one time lived in Swindon and still has many friends here.

Many older supporters will remember Mr. Neil Harris, manager of Swindon Town F.C. at the outbreak of the 1939 war, the family lived in Shrivenham Road and son John played for Southampton and was later transferred to Chelsea and became a great stalwart, captain and centre-half.

Now to something quite the opposite, which must concern everyone interested in or connected with football hooliganism, an ugly word which comes very much into our vocabulary today. Fortunately we get little of this in Swindon, and then only in one part of the ground.

The Board is determined to do everything in its power to stop anything in the nature of bad behaviour and Mr. Collings, Public Relations Officer, is most anxious to obtain the views of supporters on this matter. If anyone has any ideas or suggestions please write to him at the County Ground and he will endeavour to arrange a meeting of all interested in this subject to discuss ways and means of solving the problem.

THE GREAT WESTERN HOTEL

(OPPOSITE SWINDON RAILWAY STATION)

The business man's hotel with a top class
steak bar too!

Specialists in

LUNCHEONS and DINNERS
WEDDING PARTIES and RECEPTIONS
good food — quick service

J. ARKELL and SONS LIMITED Telephone SWINDON 22047

Mills and Merricks Limited

16-17 Bridge Street Swindon

Telephone 5365/6

"HOME OR AWAY"

our function is to ensure that your home is
tastefully and economically furnished

SWINDON'S COMPLETE HOUSE FURNISHERS

New City Office Supplies Limited

Office and Stationery Suppliers
to Industry and Commerce

6 Commercial Road Swindon

Telephone Swindon (STD Code 0793) 4605



CLARK BROS. (Swindon) LTD

Building and Civil Engineering Contractors

CONSULT US FOR
BUILDING AND CIVIL ENGINEERING
CONSTRUCTION IN ALL ITS PHASES

STRATTON ROAD

SWINDON

Telephone Swindon 27261

Supporters' Club Notes

Every football supporter is aware by now, that at long last a serious view is being taken of the rowdyism which has infiltrated into crowds at League football matches.

We, at Swindon, have been singularly free from this disease — for disease it is. The award last year, the first "Crowd of the Season" award, bears witness to this. Accordingly, the following observations are not directed towards Swindon Town supporters, but to anyone who may be thinking that the time may be ripe to exploit the crowds at the County Ground as other clubs' supporters have been exploited.

The subject was discussed at last Monday's General Committee meeting and, as a first step, it was agreed that any member of the Supporters' Club convicted of rowdyism would be automatically barred as a member of the Supporters' Club and, accordingly, from any of its sub-sections — football teams, Social Club, cricket team and so on.

It was observed that youths had been seen to be removed from the County Ground from one entrance, only to have to be removed a second time after obtaining re-entry, probably from climbing over a wall. This makes nonsense of the difficult work of the Police and it was agreed that it was essential that to merely eject offenders was insufficient. It was felt that there was a need to separate this tiny minority from true football fans on a more permanent basis. Accordingly, it was agreed to write to the Chairman of the Supporters' Club Federation and to the Home Secretary, urging that the following action be adopted:—

"That anyone adjudged guilty of rowdyism in connection with football matches be required to report at a Police Station for not less than one year, at the following times, whenever the Club they allege to support is playing a game: 30 minutes before kick-off, halfway through the first half and halfway through the second half."

This would have the effect of removing trouble makers from true football fans who pay good money to enjoy their football and would, in fact, make it more or less impossible for such offenders to attend any football match. Clubs don't want these trouble makers; fans don't want them; quite a large number of people who stay away from football matches because of them don't want them. Surely the answer is to establish a system whereby the only ones who find their pleasures restricted are these rowdies with tiny minds.

Face in the crowd – is it you?



In all future editions of this Season's programme we shall publish a photograph of a small section of the crowd at a previous match, one member of which will be clearly indicated by means of a circle. This person will be entitled to a free seat at the next match on producing the programme at the office.

WE AIM TO PLEASE — TRY US

Tunleys

(1)

Glass (2)

Wallpaper (3)

Paint (4)

Polishes (5)

Artist Materials (6)

Prints (7) Ladders (8) Mirrors (9) Brushes (10) Aladdin Heaters (11)

MEMBERS OF THE



12/13 Gloucester Street Swindon Wiltshire



throughout the West

you will find Bradley Estates beautifully situated to meet the requirements of modern living. If you are thinking about a new home and would like to receive full details of our current and planned estates write now to 74 Victoria Road Swindon Wiltshire. Please send me details of

- ☐ Green Meadow Estate, Swindon, Wiltshire
- ☐ Nythe Estate, Swindon, Wiltshire
- ☐ Monkton Park Estate, Chippenham, Wiltshire
- ☐ Park Hill Estate, Frome, Somerset
- ☐ Damory Down Estate, Blandford Forum, Dorset
- ☐ Harkwood Farm Estate, Poole, Dorset
- ☐ Roman Way Estate, Bourton-on-the-Water, Gloucestershire

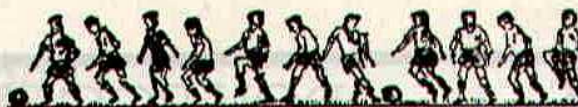
Name.....

Address.....



BRADLEYESTATES

our visitors



SHEFFIELD UNITED F.C.

Pen Pictures 1969/70

ALAN HODGKINSON

Now in his 17th season at Bramall Lane, having been signed from Worksop Town, a Midland League Club. Ex-butcher's boy who became England's goalkeeper. Under-23 international, then full caps against Scotland in 1957 and against Eire and Denmark. Made many other England appearances, the last against Wales in 1961. Went to Chile with the World Cup team. Toured with the F.A. team to New Zealand during the last close season. Is also a first-class cricketer, as batsman and wicketkeeper. At start of season had made 567 League and F.A. Cup appearances for United. Ever-present last season.

LEN BADGER

Took over from Cecil Coldwell as right-back and skipper. Has many Under-23 caps and has played for the Football League. Debut in Division One against Leyton Orient 26th April, 1963. Played for Sheffield Boys, England Boys (four times) and Young England. Toured Holland and Germany when 16 in 1962 and was youngest member of the England Youth team.

BERNARD SHAW

Younger brother of former England international left-back Graham, and plays in the same position. Was amateur for two years. Started work as a bricklayer and shot to fame partnering Badger in England Youth team. An Under-23 international.

MICK HEATON

Signed as an amateur in Spring of 1962. Made debut last season against Bury in November and played 12 games in League and F.A. Cup.

EDDIE COLQUHOUN

Took over captaincy from Badger. Was signed from West Bromwich Albion on 11th October, 1968. Previously with Bury. Born Preston Pans. Scottish Under-23 international. After debut at Huddersfield made 27 appearances at centre-half.

DAVID POWELL

Joined the Club from Wrexham on 11th September, 1968. Played for Wales the following month against Italy and has kept his international place ever since. Has made 28 appearances for United.

ALAN WOODWARD

Was the only other ever-present last season. He was top scorer with 12 League goals. A "teenager find", played for Barnsley Boys when they won the Schools Shield in 1961. Also played for Yorkshire Boys and England Youths against Belgium, Spain and Scotland in 1965.

TONY CURRIE

Signed from Watford on 1st February, 1968. Played for England Youth against France and Eire. Is London born, has had short spells with Queen's Park Rangers and Chelsea. He scored one of United's three goals in his debut against Spurs on 26th February, 1968.

JOHN TUDOR

Signed from Coventry on 14th November, 1968 for United's record fee. Scored twice in his debut at Bury two days later. Finished second highest scorer with 11 League goals in 19 appearances. Born at Ilkeston.

COLIN ADDISON

Signed from Arsenal on 28th November, 1967. Has been hit by injuries which have restricted his appearances. Played for York Boys and York City, he was with Nottingham Forest for six years and then moved to Arsenal.

GIL REECE

Another Welsh international. Was signed from Newport County 17th April, 1965, but could not make his debut until the following season. Born in Cardiff.

MICK HILL

Signed from Bethesda Athletic on 16th September, 1965 when 17. Born in Hereford, captained Hereford Boys and played for Bangor. Debut at Leicester 22nd April, 1967.

PAT BUCKLEY

Signed from Wolverhampton Wanderers on 12th January, 1968. Has been kept out through injury but made four appearances towards end of last season and scored twice.

FRANK BARLOW

Gave up chance of going to University to join United. At Mexborough Grammar School had six "O" level and three "A" level passes. Played for Yorkshire Boys and was captain of England Boys six times. Last season played at inside-left, inside-right, left-half and right-half.

DON ROGERS SPORTS

29 FARINGDON ROAD SWINDON

Telephone 27378

Main suppliers to Swindon Town Football Club

Stockists of

All leading makes of Football Boots and Clothing

Table Tennis, Badminton, Rugby and Hockey equipment

IN FACT THE COMPLETE SPORTS OUTFITTER

RIMES of SWINDON

POPULAR EXCURSION TO

Fare

adult child

PORTSMOUTH Dept. Saturday, October 25th 10.00 a.m. 15/6 10/6

ALSO SPECIAL EXCURSION TO PORTSMOUTH
INCLUDING PACKED LUNCH AND DINNER AT 1st CLASS HOTEL
ON RETURN

FARE £2 2s. 0d. inclusive CHILD £1 17s. 0d.

SERVICE DIRECT TO THE GROUND

ALL SEATS NUMBERED AND RESERVED

Book now at

102 Commercial Rd., Swindon 46 Cricklade St., Cirencester
Telephone 27113 Telephone 3479

or with any of Rimes Booking Agents

Dobell Shearman & Co. Ltd.

HIGH STREET SWINDON

Telephone 4961

FANCY and COMMERCIAL STATIONERS

TYPEWRITERS and OFFICE EQUIPMENT

Greetings Cards for all Occasions
from Leading Art Publishers



W. J. CASTLE

Office and Bakery

**4 and 5 MARKET STREET
SWINDON**

Telephone 22017

Specialists—

BIRTHDAY CAKES - WEDDING CAKES

DAIRY CREAM - PASTRIES

BUNS - ROLLS - SPONGES



Fixture List – Division I I

1969

August

9 Blackburn Rovers	(A) 0—2
13 Cardiff City	(A) 2—2
16 Carlisle United	(H) 2—2
19 Cardiff City	(H) 2—1
23 Aston Villa	(A) 2—0
30 Charlton Athletic	(H) 5—0

September

2 League Cup (2) Swansea	(A) 3—1
6 Blackpool	(A) 2—3
13 Oxford United	(H) 0—0
16 Middlesbrough	(A) 0—0
20 Queen's Park Rangers	(A) 0—2
24 League Cup (3) Oxford	(A) 0—1
27 Leicester City	(H) 1—1
30 Millwall	(H) 2—1

October

4 Bolton Wanderers	(A) 1—0
7 Carlisle United	(A) 2—2
11 Sheffield United	(H)
15 League Cup (4)	
18 Hull City	(H)
25 Portsmouth	(A)
29 League Cup (5)	

November

1 Norwich City	(H)
8 Birmingham City	(A)
15 Watford	(A)
19 League Cup Semi-Final	
22 Huddersfield Town	(H)
29 Preston North End	(A)

December

3 League Cup Semi-Final	
6 Bristol City	(H)
13 Oxford United	(A)
20 Blackpool	(H)
26 Aston Villa	(H)
27 Charlton Athletic	(A)

1970

January

3 F.A. Cup (3)	
10 Queen's Park Rangers	(H)
17 Leicester City	(A)
24 F.A. Cup (4)	
31 Bolton Wanderers	(H)

February

7 Sheffield United	(A)
14 Blackburn Rovers	(H)
21 Portsmouth	(H)
28 Hull City	(A)

March

7 Huddersfield Town	(A)
14 Preston North End	(H)
21 Bristol City	(A)
28 Watford	(H)
30 Norwich City	(A)
31 Birmingham City	(H)

April

4 Millwall	(A)
11 F.A. Cup Final	
14 Middlesbrough	(H)

League Table – Division I I

(Up to and including Wednesday, 8th October, 1969)

	P	W	D	L	F	A	P
Sheffield United	14	9	2	3	28	10	20
Queen's Park Rangers	13	9	2	2	29	13	20
Blackburn Rovers	13	8	3	2	19	5	19
Leicester City	13	7	4	2	22	13	18
Huddersfield Town	13	7	3	3	20	14	17
Swindon Town	14	5	6	3	21	16	16
Cardiff City	13	5	4	4	18	15	14
Carlisle United	13	5	4	4	18	19	14
Blackpool	13	5	3	5	14	20	13
Norwich City	14	5	3	6	12	18	13
Charlton Athletic	14	3	7	4	13	24	13
Bristol City	12	5	2	5	18	13	12
Oxford United	12	4	4	4	10	10	12
Hull City	14	5	2	7	19	22	12
Birmingham City	13	4	3	6	13	8	11
Middlesbrough	14	4	3	7	11	21	11
Bolton Wanderers	13	4	2	7	18	18	10
Preston North End	13	2	6	5	8	10	10
Portsmouth	13	3	4	6	13	24	10
Watford	13	3	3	7	13	17	9
Millwall	13	1	6	6	16	26	8
Aston Villa	13	2	4	7	11	18	8

Hatton's Newsagency

A. J. D. & N. J. Woodhouse

Newsagents :: Tobacconists
Confectioners

Agents for Wessex School of Motoring
Booking Agents for Rimes Coaches

6 REGENT CIRCUS (near G.P.O.)
Telephone Swindon 22731

BRETTS

PET and GARDEN SUPPLIES

32-33 Commercial Road
and
6 Cromwell Street Swindon

THE PORK SHOP

(Swindon Bacon Curing Co. Ltd.)

Specialists in

Bacon - Pork - Cooked Ham

50 FLEET STREET SWINDON
Telephone 22122

J. WILMER

Coal Merchants

St. Margaret's Road Swindon

Telephone 22535

SOUTHERN LAUNDRY CO. LTD.

Launderers and Dry Cleaners

HAYDON STREET SWINDON
Telephone 4161

At Your Service

A. E. LUDLOW LIMITED

Wholesale Fruit and Potato Merchant

**COLBOURNE STREET
SWINDON WILTSHIRE**
Telephone Swindon 3583

We deliver Fresh Fruit, Vegetables
and Potatoes daily—**Wholesale Only**

FOR ALL YOUR ANGLING NEEDS
CONSULT

Frank Woodward

Swindon's Fishing Tackle Specialist

25 HAVELOCK STREET SWINDON
Telephone 3879

For Paints of Good Quality

H. S. Hodges & Sons

(SWINDON) LTD.

Cricklade Road Swindon

Telephone 22422

Dulux, Brolac, Valspar, Wallcharm, etc.

24 hour Delivery
Service -

YOUR COMPLETE JANITORIAL SERVICE

Wilts Cleaning Supply Service

**Kembrey Warehouse Rear 255 Cricklade Road
SWINDON**

Telephone 21012

Represented by G. ALEXANDER
Telephone Swindon 27833



Jim Standen, Millwall 'keeper, safely gathers the ball from a Chris Jones attempt at goal.

Photo by R. Marsh

HARRY LUNN

(Ex NOTTS COUNTY, PORTSMOUTH and SWINDON TOWN F.C.)

Fish Bar and Restaurant
27-28 COMMERCIAL ROAD SWINDON

RESTAURANT open 9 a.m. to 10 p.m. for

Snacks - Lunches - High Teas - Evening Meal

FISH BAR open Mid-day and Evenings until 11 p.m.

HULFORD MOTORS LIMITED

SELF DRIVE HIRE

Fleet of 1969/8 Fords Escorts De-Luxe
Cortinas De-Luxe Cortinas 1600 Estate
(Bench Seat Column Change) — Zephyr V4s

SHRIVENHAM ROAD

(200 yards from Football Ground)

Telephone 4934

Large Car Park Available

COWLEY BROS. (Wroughton) LTD.

BUILDERS OF MODERN ATTRACTIVE
HOUSES and BUNGALOWS

Developments at

SWINDON

WROUGHTON

BADBURY

Office

28 NEWPORT STREET
SWINDON

Telephone Swindon 6870

Reserved for British Rail



Inter-City

Key of the Board

First Section

A—Burnley v. Crystal Palace
 B—Chelsea v. Derby County
 C—Everton v. Sunderland
 D—Manchester United v. Ipswich
 E—Newcastle v. Liverpool
 F—Nottingham Forest v. Manchester City
 G—Sheffield Wednesday v. Southampton
 H—Tottenham H. v. Wolverhampton W.
 I—Albion v. Leeds United
 J—Birmingham v. Blackburn Rovers
 K—Cardiff City v. Aston Villa
 L—Huddersfield Town v. Charlton A.
 M—Hull City v. Oxford United
 N—Middlesbrough v. Bolton W.
 O—Millwall v. Blackpool
 P—Norwich C. v. Queen's Park Rangers
 Q—Portsmouth v. Bristol City
 R—Preston North End v. Leicester City
 S—Watford v. Carlisle United
 T—Bournemouth v. Fulham

Second Section

A—Bradford City v. Barnsley
 B—Bristol Rovers v. Rotherham
 C—Doncaster Rovers v. Luton Town
 D—Gillingham v. Tranmere Rovers
 E—Orient v. Reading
 F—Plymouth v. Rochdale
 G—Stockport County v. Mansfield Town
 H—Walsall v. Halifax Town
 I—Aldershot v. Lincoln City
 J—Colchester v. Bradford
 K—Exeter v. Crewe
 L—Grimsby v. Darlington
 M—Northampton Town v. Wrexham



Going by Car?

PORTSMOUTH

Saturday, 25th October, 1969

SWINDON to PORTSMOUTH

Leave Swindon by the A345 road to Marlborough, leave Marlborough on the A346 to **Burbage**. **16½ miles**

Take A338 from Burbage and join A346 at Collingbourne Ducis, continue till junction with A342 and take this road to **Ludgershall**. **25½ miles**

On leaving, turn left for Weyhill and join the A303 for Andover then via A3057 and B3420 through Wherwell, join the A34 and continue to **Winchester**. **47½ miles**

Follow A34 until junction with A333 and continue via Bishops Waltham and Wickham to join the A3. Continue to ground via Copnor Road and Milton Road to Fratton Park, **Portsmouth**. **74½ miles**

Route kindly supplied by R.A.C.



Suppliers to the Swindon Team

MAY WE SUPPLY YOU?



EARLE

of Chippenham Limited

MAIN

FORD

DEALERS

COCKLEBURY ROAD CHIPPENHAM

Telephone 3255

H. HIBBERD LIMITED

FOR YOUR EARTH-MOVING EQUIPMENT

Plant Hire Contractors



40 NEWPORT STREET SWINDON

Telephone Swindon 6125



Suppliers to the Swindon Town

The man in the middle

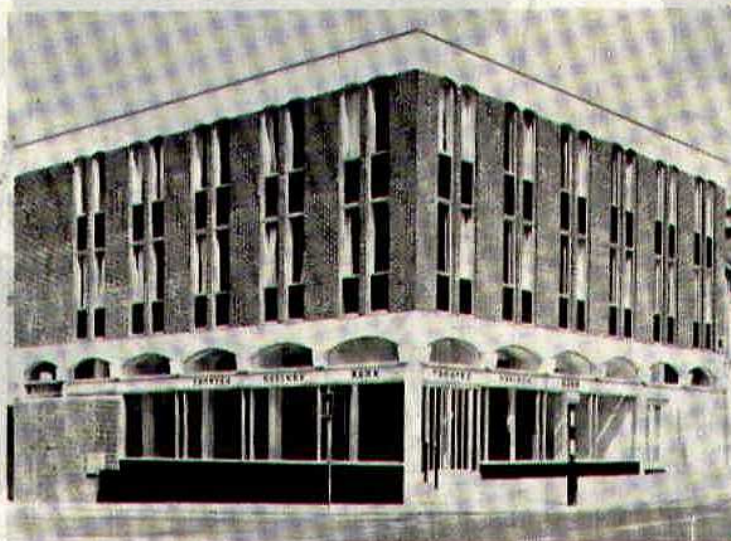


Ricky Nicholson (44) is a former player with Spurs and Stockport County, and is in his sixth season as a League referee, following seven seasons as a linesman.

Married, with three children, he is the Managing Director of his own Materials Handling company. Among his hobbies are golf and travel. He was recently elected as Secretary of the Association of Football League Referees and Linesmen.

T RUSTEE
S AVINGS
B ANK

93 Commercial Road
Swindon



Facilities include

- CURRENT ACCOUNT SERVICE
- 24 HOUR CASH DISPENSER
- T.S.B. UNIT TRUST
- CONTRACTUAL SAVINGS SCHEME
(giving substantial Tax benefits)

**INTEREST 6½% IN THE
SPECIAL INVESTMENT DEPT.**

AKERS GARAGE LIMITED

THE STREET MOREDON SWINDON WILTSHIRE

Telephone Swindon 3457/8

main dealer for
VAUXHALL/BEDFORD
and
Parts and Accessories
Sales and Service

Showrooms open
MONDAY to FRIDAY — 8 a.m. to 8 p.m.
SATURDAY — Closed 7 p.m.
SUNDAYS — 10 a.m. to 2 p.m. for Petrol and Viewing



MODERN LIVING IN EXPERIENCED HANDS

Wilson homes are the result of over 60 years experience in house building. The Company Architect and his design team are always researching into the ever changing requirements of home buyers, to give them better designed homes, which are easy to run, easy to maintain and comfortable to live in.



All our houses and bungalows are built to the stringent specification of the National House Builders Registration Council who will guarantee your home for 10 years.

Visit a Wilson Show Home and you will see for yourself why Wilson's have such a reputation in giving value for money.

WILSON

(Swindon) LTD., 90-92 Commercial Road, Swindon Telephone 6361 (3 lines)

seating manufacturers for Stadium Seats Ltd

- * Heavy, medium and light steel fabrication
- * Custom made production line equipment
- * Ancillary work for industry and the building trade

FAST EFFICIENT SERVICE BY



MARTYN LYNSHAW LTD

BOUNDARY WORKS - STRATTON ROAD - SWINDON - WILTS

Telephone 21844

spectator seating in high density polyethylene

- * Supplied to over 36 Football League clubs
- * Any colour. No maintenance
- * Industrial seats for the food, electronics and pharmaceutical industries
- * Largest supplier of spectator and industrial seating in Europe

STADIUM SEATS LTD

STRATTON ROAD - SWINDON - WILTS Telephone 21844